

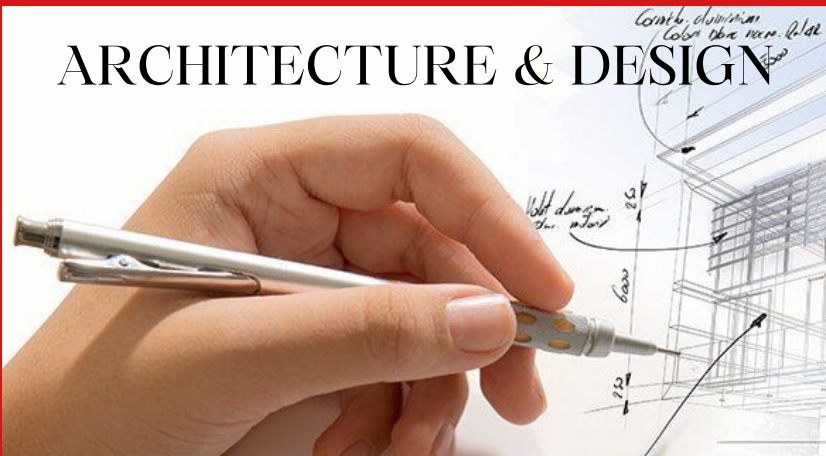


SEALARK GROUP

HO: No.36, K.Channasandra Main Road Pete
Krishnappa Layout, Horamavu Post,
Bengaluru- 560043 Mob:8861738009
E-mail: info@sealarkgroup.com

BO: No.13, Bangarpet Main Road, Dharmaraja
Nagar, Near RTO Office,
Kolar- 563101. Mob: 9743704777
E-mail: kolarsealarkgroup@gmail.com

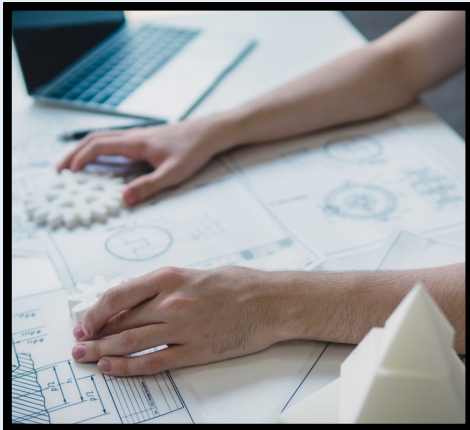
ARCHITECTURE & DESIGN



CONSTRUCTION MANAGEMENT

BRICK & BOLT BUDGET PACKAGE FOR TURNKEY HOUSE CONSTRUCTION

95904 43300 / 95387 89777 / 88617 38009 / 97437 04777



1. Contact Us

Contact us by phone, email, WhatsApp, or by filling out our online form with your basic requests and plot information. You'll receive a briefing from one of our executives about our services and practices.

2. Consultation

When you sign up and the proposed services are approved, a project manager will be assigned to you. We will speak with you several times so that we can fully comprehend your needs.



3. Designing concept

For your evaluation and comments, the designer will create a recommended concept design taking into account your needs, storyline, and Vastu. Be prepared to take some time out of your hectic schedules for the conversation.

4. Revisions

It's time to talk to your project manager about the revisions and alterations needed after examining the concept design with your family. The designer will create an updated design after taking into account your comments. You will receive a satisfactory repetition of this.



5. Design Handover

When your project is finished, we will provide all the drawings in PDF format or soft copies if you specifically request them.

6. Online Support

Our partnership doesn't end after we deliver the final design; we also offer online and telephone consultations during execution.



1. Consultation

Send us an email or give us a call at 953 8789 777, and one of our technical experts will get in touch with you, listen to all of your specific needs, and give you an estimate.

2. Check our work credentials

Peruse our projects to learn more about the caliber of our work, then visit the office to negotiate a deal.



3. Signing the contract

Choose a day that works for you, then sign the upfront construction contract. It enables us to move the Design along.

4. Architecture & Design

According to your needs and suggestions, our qualified architects will give you high-quality designs. Discuss the design and make it final.



5. Execution & Tracking- Updating

The project's execution will begin. Your daily work progress will be updated by our project management staff in the form of photos and videos.

6. Move in

We ensure that the project is completed smoothly and on schedule. You can joyfully relocate to your dream residence.

Love, hope, and dreams all have their beginnings in a home. Building a house is the first step, though. We thus wish to share in your love, hope, and dream. Let us construct your house!

SEALARK GROUP



STANDARD PLAN - ₹ 1890/sq.ft

Design & Drawings

. Floor Plan, Structural Design.

Structure

. Steel - Meenashi / Sunvik / Kamadhenu

. Cement - Priya / JSW / Bharathi / Zuari

. Sand - Standard M-Sand

. Aggregate - 40mm and 20mm

. Walls-6" Solid Blocks for the external walls and 4" solid blocks for the internal walls.

Doors and Windows

. Main Door and Pooja Door frame 5"x3" & 1.25" thick door teak wood

. Bedroom and toilet Red Sal Frame 4" x 2.5" thick with flush doors and water proof doors.

. Aluminium/ Upvc windows with MS Grills for all windows and ventilators.

Flooring

. Vitrified tiles 50/-basic rate floor flooring and antiskid ceramic tiles for toilets.

.Dadoding for kitchen 3' and toilet upto 7' with 35/- basic rate.

. Kitchen platform & staircase with granite.

.Parking tiles shall be antiskid tiles 30/- basic rate.

Plumbing

.Ashirwad & Astral Pipes and fittings.

.Bathroom fittings upto 15000/- for each toilet.

.Kitchen SS Single Bowl

Electrical

.Finolex wire with Achor Roma Switches & sockets and MCBs

Painting

.Asian Tractor Emulsion with two Coats of Birla Putty.

.External Primer with Apex Paint.

. Polish for Main Door & Pasint for other Doors and Window Grills.

Fabrication

. MS Gate Shall be provide 15000/- allowance.

. Staircase MS Railing

Miscellaneous

. Over Head Tank With 1000 Ltrs Capacity.

. Basic Elevation with plating and Pointing Works.

.UG Sump Upto 6000 Ltrs Capacity.

. Compound Wall will be charged Extra.



CLASSIC PLAN- ₹ 2050/sq.ft

Design & Drawings	Plumbing
. Floor Plan, Structural Design 3D Elevation	.Ashirwad & Astral Pipes and fittings.
	.Bathroom fittings upto 20000/- for each toilet.
Structure	.Kitchen SS Single Bowl with Drain Board.
. Steel - JSW / INDUS	
. Cement - Dalmi / Acc / Cormandal	Electrical
. Sand - Standard M-Sand	
. Aggregate - 40mm and 20mm	.Finolex wire with Achor Roma Switches & sockets and MCBs
. Walls-6" Solid Blocks for the external walls and 4" solid blocks for the internal walls.	Painting
Doors and Windows	.Asian Tractor Emulsion with two Coats of Birla Putty.
. Main Door and Pooja Door frame 5"x3" & 1.25" thick door teak wood	.External Primer with Apex Paint.
. Bedroom and toilet Red Sal Frame 5" x 3" thick with flush doors and water proof doors.	. Polish for Main Door & Pasint for other Doors and Window Grills.
. Red Sal 5"x3" thick windows And shutters with Glass with MS Rod for all windows.	Fabrication
Flooring	. MS Gate Shall be provide 20000/- allowance.
. Vitrified tiles 65/-basic rate floor flooring and antiskid ceramic tiles for toilets.	. Staircase MS Railing for external.
.Dadoding for kitchen 3' and toilet upto 7' with 50/- basic rate.	
. Kitchen platform & staircase with granite.	Miscellaneous
.Parking/Utility/Balcony tiles shall be antiskid tiles 55/- basic rate.	. Over Head Tank With 1500 Ltrs Capacity.
	. Elevation shall be as per 3D elevation using texture and paint.
	.UG Sump Upto 8000 Ltrs Capacity.
	. Compound Wall will be charged Extra.



PREMIUM PLAN- ₹ 2250/sq.ft

Design & Drawings

. Floor Plan, Structural Design 3D Elevation.

Structure

. Steel - JSW / INDUS / Tata

. Cement - Birla / ACC

. Sand - Standard M-Sand

. Aggregate - 40mm and 20mm

. Walls-8" Solid Blocks for the external walls and 6"/ 4" solid blocks for the internal walls.

Doors and Windows

. Main Door and Pooja Door frame 6"x4" & 1.25" thick door teak wood

. Bedroom and toilet Red Sal Frame 5" x 3" thick with flush doors and water proof doors.

.Honne Wood 5"x3" thick windows and shutters with glass with Ms Rod for all windows.

Flooring

. Granite 100 to 150/-basic rate floor flooring and antiskid ceramic tiles for toilets.

.Dadodging for kitchen 3' and toilet upto 7' with 55/- basic rate.

. Kitchen platform & staircase with granite.

.Parking/Utility/Balcony tiles shall be antiskid tiles 55/- basic rate.

Plumbing

.Ashirwad & Astral Pipes and fittings.

.Bathroom fittings upto 25000/- for each toilet.

.Concealed Type WC and Shower

.Kitchen SS Single Bowl with Drain Board.

Electrical

.Havells wiring with Achor Roma / GM Switches & sockets and MCBs.Wiring for UPS and AC Point .

Painting

.Asian Premium Emulsion with two Coats of Birla Putty.

.External Primer with Apex Paint.

. Polish for Main Door & Pasint for other Doors and Window Grills.

Fabrication

. MS Gate Shall be provide 25000/- allowance.

. Staircase SS Railing External & SS for Internal.

Miscellaneous

. Over Head Tank With 2000 Ltrs Capacity.

. Elevation shall be as per 3D elevation using texture, Cladding . SS with Glass for Balcony if any and paint.

.UG Sump Upto 12000 Ltrs Capacity.

. Copper Gas Pipe far all Kitchens.

. Compound Wall will be charged Extra.



ROYAL PLAN - ₹ 2650/sq.ft

Design & Drawings

. Floor Plan, Structural Design 3D Elevation.

Structure

. Steel - JSW / INDUS / TATA

. Cement - Birla / ACC / Ultratech

. Sand - Standard M-Sand

. Aggregate - 40mm and 20mm

. Walls-8" & 4.5" Brick Walls.

Doors and Windows

. Main Door and Pooja Door frame 8"x4" & 1.25" thick door teak wood

. Bedroom and toilet Red Sal Frame 5" x 3" thick with flush doors and water proof doors.

.Honne Wood 5"x3" thick windows and shutters with glass with Ms Rod for all windows & Ventilators

Flooring

. Marbel 300 to 400/-basic rate for flooring and antiskid ceramic tiles 70/-for toilets.

.Dadodging for kitchen 3' and toilet upto 7' with 70/- basic rate.

. Kitchen platform & staircase with granite.

.Parking/Utility/Balcony tiles shall be antiskid tiles 70/- basic rate.

Plumbing

.Ashirwad & Astral Pipes and fittings.

.Bathroom fittings upto 35000/- for each toilet.

.Concealed Type WC and Shower

.Kitchen SS Single Bowl with Drain Board.

Electrical

.Havells wiring with Achor Roma / GM Switches & sockets and MCBs.Wiring for UPS and AC Point .

Painting

.Asian Royal Luxury Emulsion with two Coats of Birla/ JK Putty.

.External Primer with Apex Paint.

. Polish for Main Door & Pasint for other Doors and Window Grills.

Fabrication

. MS Gate Shall be provide 35000/- allowance.

. Staircase SS Railing External & SS for Internal.

Miscellaneous

. Over Head Tank With 2000 Ltrs Capacity.

. Elevation shall be as per 3D elevation using texture, Cladding . SS with Glass for Balcony if any and paint.

.UG Sump Upto 15000 Ltrs Capacity.

. Copper Gas Pipe far all Kitchens.

. Compound Wall will be charged Extra.